



## SAFARI R-SPEC SNORKEL

**SS75RE**

01/04/15

ITEM	DESCRIPTION	QTY	PART NO
1	BODY - SNORKEL	1	330-133-400R
2	3" AIR RAM ASSEMBLY	1	000-135-050
6	BRACKET - UPPER MOUNTING	1	330-032-000
7	BOLT - HEX – 6mm x 1.0 x 12mm	2	000-002-100
10	CLIP - BODY - PLASTIC	3	000-960
11	SCREW - S/T - 4.2 x 13mm	3	000-951
3	STUD - S/S – 8mm x 1.25 x 25mm - O/L	4	000-110
4	WASHER - BODY – 8mm x 30mm	4	000-311-300
5	NUT - NYLOC – 8mm x 1.25	4	000-205-300
14	POP RIVET – 4mm x 12mm	6	000-958
15	PLUG - PLASTIC – 80mm	1	000-959-400
16	CLAMP - HOSE - 60/80	1	000-907
12	ADAPTOR - AIR CLEANER ENTRY	1	330-023-200
13	"O" RING – 8mm SECTION x 290mm	1	000-470-029
17	TEMPLATE	1	330-017-200
18	HOSE CLAMP - SIZE 48 (BLACK)	1	000-918/B

# **WARNING!!**

**IT IS AN INSTALLER  
RESPONSIBILITY TO VERIFY  
ALL COMPONENTS, AND  
PARTICULARLY THE  
TEMPLATE ARE CORRECT,  
BEFORE STARTING ANY PART  
OF THE SNORKEL  
INSTALLATION.**

**(CHECK TEMPLATE AGAINST  
SNORKEL BODY)**



## SAFARI R-SPEC SNORKEL

# SS75RE

---

TOYOTA LANDCRUISER FZJ 75

1FZ-FE PETROL (4.5L)

---

**Fitment to:** Right hand side  
**Fitting time:** Approximately 120 minutes  
**Comments :** Snorkel snout may require trimming  
**Special Tools:** 89mm holesaw  
Air hacksaw (jigsaw)  
Pop rivet gun

---

### Instructions:

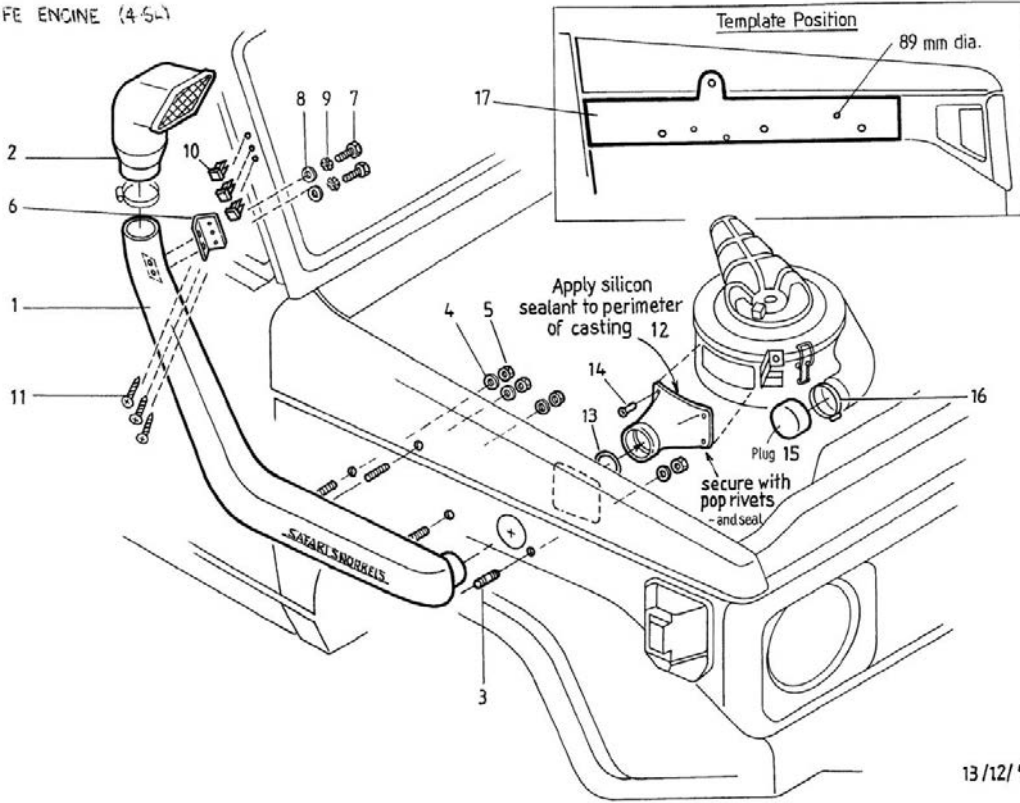
1. Remove the air cleaner assembly and plastic air ducting from the engine bay. The Landcruiser badge will need to be removed from the right hand guard.
2. Tape the template in position on the vehicle (refer to the drawing) and mark all the hole positions, using a felt pen. Remove the template.

3. Drill a 4mm pilot hole for each of the holes. Open out the 4 mounting holes to 16mm using a step drill. Using an 89mm holesaw, cut the main hole. The drill should be held at 90° to the panel while cutting this hole. After drilling/cutting, deburr each hole to leave a clean edge.
  4. Screw the stainless steel studs into the inserts in the back of the snorkel. Fasten the upper bracket to the snorkel using 2, 6mm bolts and washers. Locate the snorkel on the vehicle and mark the upper mounting holes on the "A" pillar. Remove the snorkel and drill the mounting holes to 8mm.
  5. Paint all holes to prevent rust. Insert the plastic body clips into the upper mounting holes. Position the snorkel on the vehicle and secure using appropriate hardware.
  6. Slide the adaptor casting over the snorkel snout. Sit the air cleaner body in position. If any bracketry prevents correct fitment, remove the bracket by drilling the spot welds. Once the air cleaner body is in the correct position, mark the adaptor casting located on the air cleaner body. Remove the air cleaner and adaptor from the vehicle. Hold the casting in position against the air cleaner casting and using an air hacksaw, cut the new air entry hole to match the adaptor. Rivet the casting in place on the air cleaner body and seal the joint with silicone.
  7. Place a bead of silicone around the adaptor snout and refit the air cleaner assembly to the vehicle. Blank off the original air entry to the air cleaner using the blank off plug supplied secured using a 60/80 clamp (do not overtighten this clamp).
  8. Sit the air ram on top of the snorkel and fasten the clamp.
- \* A small bead of silicone may be applied around the top and front edges of the snorkel to seal it against the body.

# SAFARI

## 4X4 ENGINEERING

SS75RE IFZ-FE ENGINE (4.5L)



13/12/94